

User Guide

- 1** Plug in extender near your devices
- 2** Add to your existing network
- 3** Connect your devices

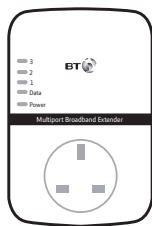
Multiport Broadband Extender 500 Add-on

Follow the steps in this guide to set up your add-on.

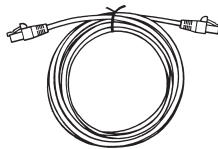
If you need some help, see the Frequently Asked Questions at bt.com/bbextendermulti500 or call 0808 100 6116*.

* Calls made from within the UK mainland network are free. Mobile and International call costs may vary.

Check box content:



Multiport Broadband
Extender 500



Ethernet cable



Find out more

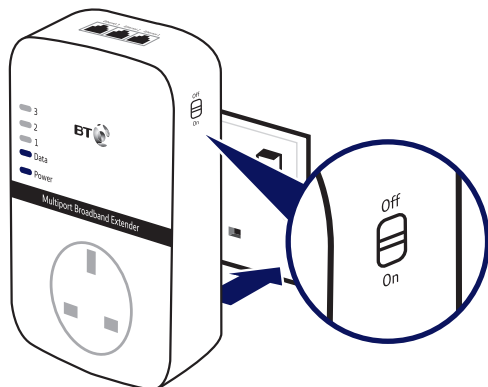
- If you need more detailed instructions, Frequently Asked Questions are available at bt.com/bbextendermulti500
- If you cannot find the answer to your problem in the Frequently Asked Questions, then please call our free Helpline on **0808 100 6116***. Our dedicated advisors are more likely to be able to help you than the retailer where you made your purchase.

1 Plug in extender near your devices

TIP: you might find it easier to plug your new broadband extender in the same double power socket or near one of your existing ones whilst you set things up.

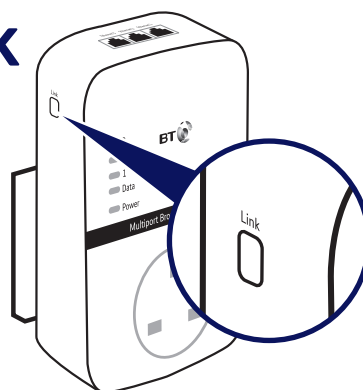
- 1 Plug the extender directly into a wall power socket near the device you want to connect. Make sure the power socket and extender are switched on. The On/Off button is on the side of the extender.

IMPORTANT: to work properly, extenders must be plugged directly into the wall socket and not into extension leads.



2 Add to your existing network

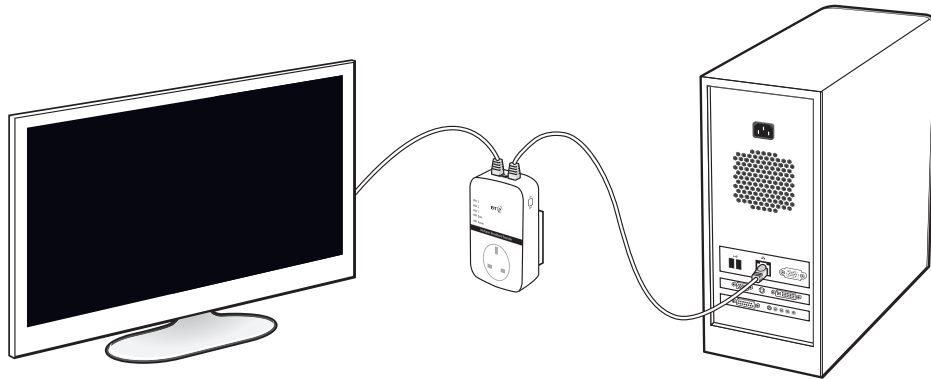
- 1 Press the **Link** button on the side for 5 to 8 seconds.
- 2 Wait for the device to restart. If everything's okay, the **Power** indicator will go back to steady green.
- 3 Press the **Link** button again, this time for 1 second.
- 4 Within 2 minutes, press the **Link** or equivalent button on any of the existing extenders for 1 second to complete the connection to the network.
- 5 Wait for connection to complete. Give it a couple of minutes. If everything's okay, the **Power** and **Data** indicators on your new extender will light up.



TIP: See Connection help overleaf if the **Data** indicator doesn't light up on the extender.

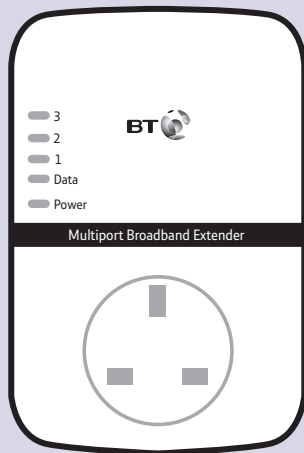
3 Connect your devices

If the connection is successful, connect your devices to the broadband extender using the ethernet cable provided.



ⓘ After 5 minutes of inactivity on the ethernet port, the extender will go into power save mode. The **Power** indicator will be flashing.


Light status



Light	Status	What's happening
Power	On	Extender running normally
	Flashing	Extender resetting, synchronising or power save mode
	Off	Extender turned off
Ethernet 1-3	On	Device connected to extender
	Flashing	Data being sent or received
	Off	No device connected to extender or device switched off
Data	On	Extender connected to network Green: High transfer speed Orange: Medium transfer speed Red: Low transfer speed
	Off	No connection to network

Link button

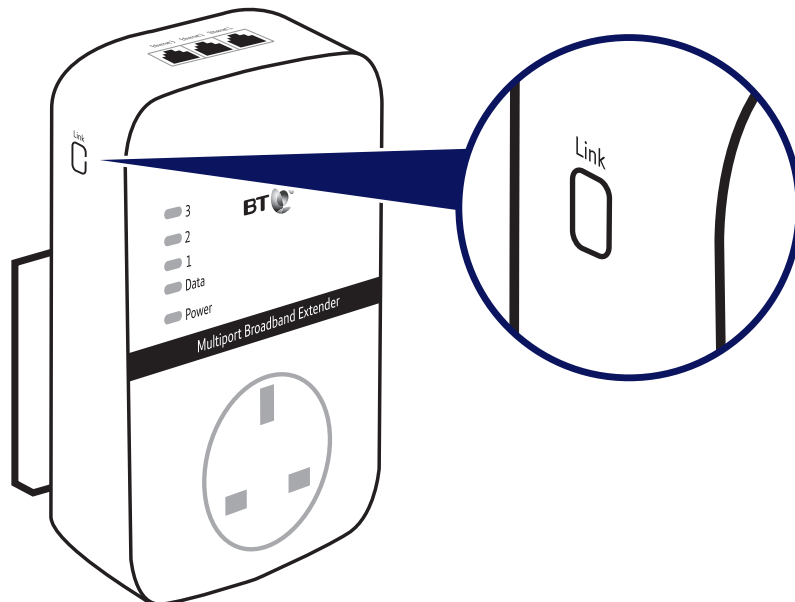
What do you want to do?	Press and hold button
Prepare to join a new network	5 to 8 seconds
Join a new network	1 second
Reset to factory settings	More than 15 seconds until Data and Power lights go out

 TIP: you may find it helpful to use a watch or a clock when using the Link button.

Reset to factory settings

If your extender stops working or becomes unpaired, you can reset it to the factory settings:

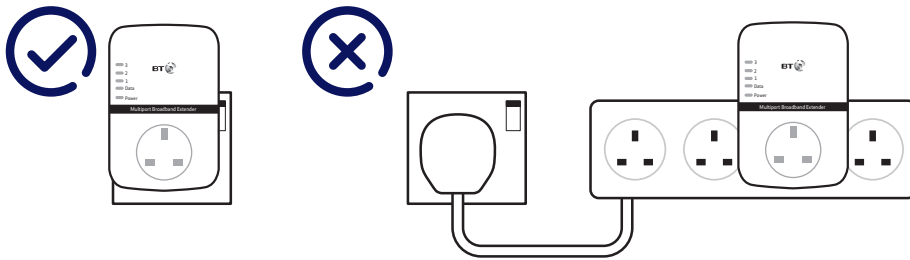
- 1 Make sure the extender is plugged in and the power socket's switched on.
- 2 Press the **Link** button for more than 15 seconds until the **Data** and **Power** lights go out. If everything's okay, the **Power** indicator on the extender will light up.



For detailed instructions and technical information for setting up the extender, please see the Frequently Asked Questions at bt.com/bbextendermulti500

? Connection help

IMPORTANT: to work properly, extenders must be plugged directly into the wall socket and not into extension leads.



- If you are having problems synchronising one or more extenders, try resetting them to their default factory settings. Most extenders have a Reset (Link) button that does this. Refer to the extender user guide for more detailed information on how to add more powerline devices.
- Swap devices to help check and isolate a problem with a particular extender unit.
- To check if your home's electrical wiring is affecting your broadband extenders, try plugging in extenders in the same room. Some old wiring or fuse boxes might affect your network performance.
- House appliances that draw large amounts of power, like refrigerators, freezers, microwaves and air conditioning systems, might cause interference with your network.
- For best network performance, use broadband extenders from BT.



If you need more help, go to bt.com/bbextendermulti500 or call 0808 100 6116*.

General information

For information on safety instructions, technical information or setting up the extender, please see the Frequently Asked Questions at bt.com/bbextendermulti500

Guarantee

Your Multiport Broadband Extender 500 Add-on is guaranteed for a period of 3 years from the date of purchase. Subject to the terms listed below, the guarantee will provide for the repair of, or at BT's or its agent's discretion, the option to replace the Multiport Broadband Extender 500 Add-on or any component thereof which is identified as faulty or below standard, or as a result of inferior workmanship or materials. Products over 28 days old from the date of purchase may be replaced with a refurbished or repaired product. The conditions of this guarantee are:

- the guarantee shall only apply to defects that occur within the 3 year guarantee period
- proof of purchase is required
- the equipment is returned to BT or its agent as instructed.

This guarantee does not cover any faults or defects caused by accidents, misuse, fair wear and tear, neglect, tampering with the equipment, or any attempt at adjustment or repair other than through approved agents.

This guarantee does not affect your statutory rights.

To find out what to do if your extender is in or outside of the 3 year guarantee, please see the Frequently Asked Questions at bt.com/bbextendermulti500

How to recycle your equipment

The symbol shown here and on the product means that the product is classed as electrical or electronic equipment, so DO NOT put it in your normal rubbish bin.



It's all part of the Waste Electrical and Electronic Equipment (WEEE) Directive to recycle products in the best way – to be kinder to the planet, get rid of dangerous things more safely and bury less rubbish in the ground.

You should contact your retailer or supplier for advice on how to dispose of this product in an environmentally friendly way.

Declaration of Conformity

For a copy of the Declaration of Conformity please refer to bt.com/bbextendermulti500

Power consumption

In operation	2.5 Watts
Network standby	2.2 Watts
Standby mode	0.6 Watts
Off mode	0.3 Watts
Elapsed time before going into standby mode	5 Minutes

For a Better Future



We're always looking to make our products last longer and use less power, so we don't have such a big impact on the environment.

To find out about what we are doing, visit bt.com/betterfuture

Offices worldwide

The services described in this publication are subject to availability and may be modified from time to time. Services and equipment are supplied subject to British Telecommunications plc's respective standard conditions of contract. Nothing in this publication forms any part of a contract.

© British Telecommunications plc 2015.
Registered Office: 81 Newgate Street, London EC1A 7AJ.
Registered in England No. 1800000.

Designed and produced by The Art & Design Partnership Ltd.

Printed in China / Issue 4 / ADP02-15

