

## Connection help

### Don't know if you're connecting via router or extender?

- The easiest way is to compare the signal strength displayed on your device with the extender switched on and off. The extender simply relays the data from your hub/router. It's your device that controls which signal it connects to.

### Can't connect extender to router

- If the range lights continue to scroll back and forth for more than 1 minute after connection attempt. Check your hub/router is switched on and try moving your extender closer to it.
- If your device often loses internet access and the extender's **Too far** or a bit too far light is on, try moving the extender to another socket.
- If you are trying to use WPS but it doesn't work (**Too far** and **Too close** (red) lights continue to flash), it may be that it's incompatible with the WPS function in the extender. Try switching the extender Off then On and repeat Method 1. If it still fails, follow the steps in Method 2, to connect without using the WPS button.
- If you're unable to connect using Method 2, check you have selected the correct wireless network and you've entered the correct wireless key.

### Can't connect to internet

- Check your router is connected to the internet and your wi-fi is working correctly.

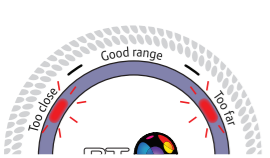
### Can't connect your device to wireless

- Make sure your device is correctly set-up to connect to your hub/router before trying to use the extender.
- Microwaves and some electrical equipment may interfere with the wireless signal.
- Check the lights on your extender and make sure you are in Good range, if not see the section 'Move extender to optimum location'.
- Thick/concrete walls and ceilings will affect wireless performance.

### All lights are off

- Check the power socket is working and switched on.
- Check the extender is turned on (the **On/Off** button is on the top).

### Light status

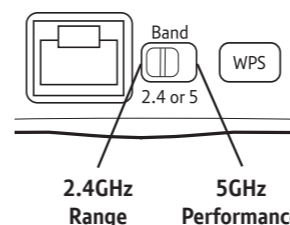
Light	Status	What's happening
Power	On	Extender running normally
	Off	Extender turned off
	Red Flashing	Extender not configured to connect to hub/router Go to step <b>1</b>
	Red/Blue Scrolling	Extender connecting to hub/router If scrolling for more than 1 min, check your hub/router is switched on and try moving your extender closer to it
WPS	On	WPS connection successful (goes off after 30 seconds)
	Flashing	Authentication in progress or faster flashing indicates connection error
	Off	No WPS session in progress

### The band switch

This switch sets the frequency band your extender uses to connect to the hub/router. By default your extender uses the 2.4GHz band for maximum range and compatibility.

If you have a dual-band hub/router (e.g. BT Home Hub 4 or 5), selecting the 5GHz band may improve performance (speed) as there is less wireless congestion.

To change to the 5GHz band, unplug the extender, move the band switch to the 5 position and go to step **1 Method 2 - Without WPS button.**

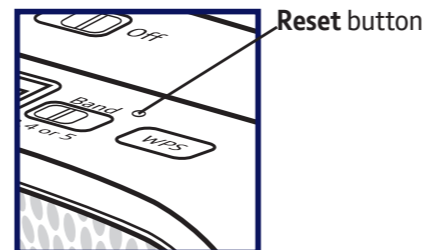


- Selecting the 5GHz band may reduce the range and you will need to move the extender closer to your hub/router.

### Reset to factory settings

If you need to access advanced settings, have forgotten your password or if the extender stops working you can reset it to its factory settings.

- Make sure the extender is plugged in and switched on.
- Press the **Reset** button for 1 second to restore factory default settings.



### Using the ethernet cable

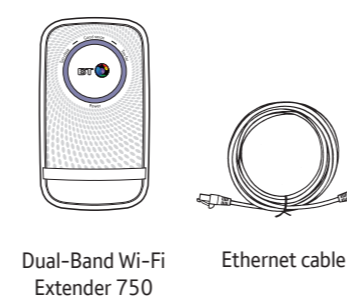
You can connect an additional device to the ethernet port that will use the wi-fi extension at the same time as your wireless devices.

Connect your device to the extender's ethernet port using an ethernet cable.

#### Extender default settings



#### Box contents



### Find out more

- If you need more help, go to [bt.com/wifextender750](http://bt.com/wifextender750) where you can view Frequently Asked Questions.
- If you cannot find the answer to your problem in the Frequently Asked Questions, then please call our free Helpline on **0808 100 6116\***. Our dedicated advisors are more likely to be able to help you than the retailer where you made your purchase.

\* Calls made from within the UK mainland network are free. Mobile and international call costs may vary.

#### Offices worldwide

The services described in this publication are subject to availability and may be modified from time to time. Services and equipment are supplied subject to British Telecommunications plc's respective standard conditions of contract. Nothing in this publication forms any part of a contract.

© British Telecommunications plc 2017. Registered Office: 81 Newgate Street, London EC1A 7AJ. Registered in England No. 1800000.

Designed and produced by The Art & Design Partnership Ltd.  
Printed in China / Issue 5 / ADP08-17



## General information

For information on safety instructions, technical information or setting up the extender, please see the Frequently Asked Questions at [bt.com/wifextender750](http://bt.com/wifextender750)

### Guarantee

Your Dual-Band Wi-Fi Extender 750 is guaranteed for a period of 3 years from the date of purchase. Subject to the terms listed below, the guarantee will provide for the repair of, or at BT's or its agent's discretion, the option to replace the Dual-Band Wi-Fi Extender 750 or any component thereof which is identified as faulty or below standard, or as a result of inferior workmanship or materials. Products over 28 days old from the date of purchase may be replaced with a refurbished or repaired product.

The conditions of this guarantee are:

- the guarantee shall only apply to defects that occur within the 3 year guarantee period
- proof of purchase is required
- the equipment is returned to BT or its agent as instructed.

This guarantee does not cover any faults or defects caused by accidents, misuse, fair wear and tear, neglect, tampering with the equipment, or any attempt at adjustment or repair other than through approved agents.

This guarantee does not affect your statutory rights.

To find out what to do if your extender is in or outside of the 3 year guarantee, please see the FAQ at [bt.com/wifextender750](http://bt.com/wifextender750)

### How to recycle your equipment

The symbol shown here and on the product means that the product is classed as electrical or electronic equipment, so DO NOT put it in your normal rubbish bin.



It's all part of the Waste Electrical and Electronic Equipment (WEEE) Directive to recycle products in the best way – to be kinder to the planet, get rid of dangerous things more safely and bury less rubbish in the ground.

You should contact your retailer or supplier for advice on how to dispose of this product in an environmentally friendly way.

### Radio Equipment Directive Declaration of Conformity

Hereby, British Telecommunications plc declares that the radio equipment type Dual-Band Wi-Fi Extender 750 (085854) is in compliance with Directive 2014/53/EU.

The full text of the EU declaration of conformity is available at the following internet address: [bt.com/producthelp](http://bt.com/producthelp)

This device has been evaluated for and shown compliant with European Guidelines when installed and operated with a minimum distance of 20cm between the unit and your body.

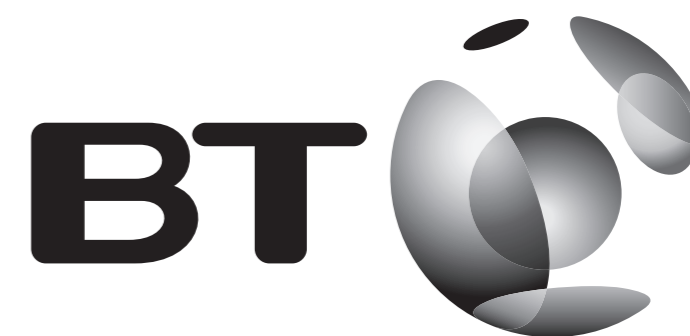
Operations in the 5.15-5.35GHz band are restricted to indoor usage only within Europe.

### Radio transmission information

- Frequency range 2401 – 2483MHz  
Max power 19.37dBm 86.50mW
- Frequency range 5170 – 5710MHz  
Max power 24.40dBm 275.42mW

### Power consumption

In operation	4.0 Watts
Network standby	3.8 Watts
Off mode	0.1 Watts
Elapsed time before going into standby mode	5 Minutes



## Dual-Band Wi-Fi Extender 750 User Guide

For a video on how to set up your extender, go to [bt.com/wifextender750](http://bt.com/wifextender750)

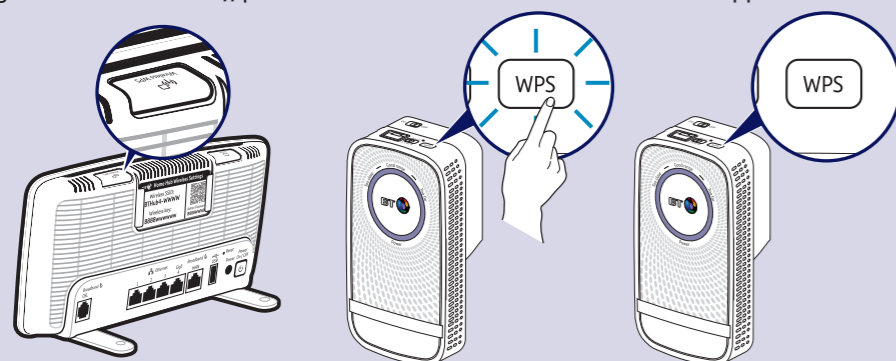
# 1 Connect to your hub/router

## Method 1 - Using WPS button

Connection to your router is very easy if it supports WPS; most recent routers do (e.g. BT Home Hub 3 and later, or any other router that has a WPS button). If your router doesn't support WPS or this method fails, go to 'Method 2 - Without WPS button' opposite.

- 1 Plug the extender into a power socket **near your broadband wireless router** (e.g. in the same room). Check the extender **On/Off** button on the top is switched on. Wait 20 seconds for the extender to boot up. The **Power** light will be steady blue and the **Too close** and **Too far** red lights will be flashing together.
- 2 Press the **WPS** button on your router.
- 3 Press the **WPS** button on the extender (for 1 second) within 2 minutes.
- 4 Wait until the **WPS** light stops flashing and one of the range lights is solid. The extender is now configured with your hub/router, and you're ready to find its optimum location, see **2** below.

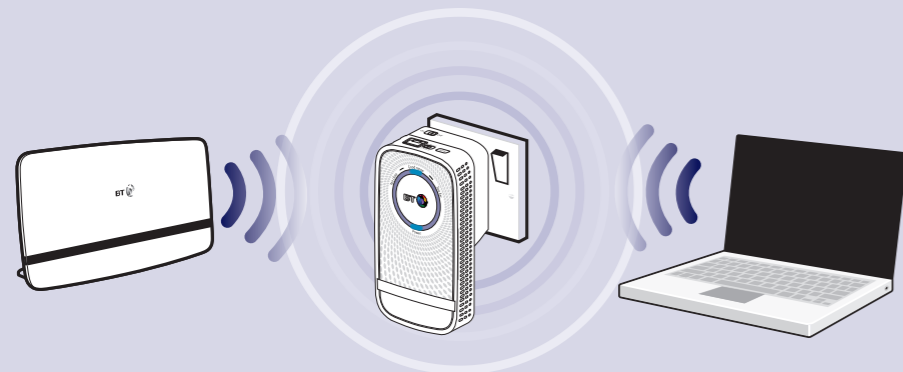
If this fails (WPS light stops flashing and the **Too far** and **Too close** red lights continue to flash), please use 'Method 2 - Without WPS button' opposite.



Note: the WPS button on your extender is only used to connect to the router and can't be used to connect devices.

## 2 Move extender to optimum location

- 1 Plug in the extender halfway between your hub/router and the area you wish to extend wi-fi to.



- 2 Give the extender 20 seconds to boot up, then the range lights will scroll back and forth while it searches and connects to your router. After about 30 seconds, the flashing will stop and the signal quality will be shown. Ideally the **Good range** light will become solid blue and you can go to step **3**. If not, try a different location as described in point 3.

If the range lights continue to scroll back and forth for more than 1 minute. Check your hub/router is switched on and try moving your extender closer to it.

## Method 2 - Without WPS button

If you don't have a WPS button on your hub/router, you can set up your extender using the web based set-up with an internet browser.

Important: Before following these instructions, make sure your computer is not connected to the internet (unplug its ethernet cable or disconnect from your wi-fi network).

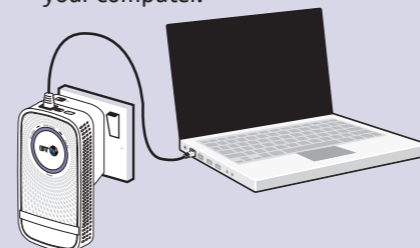
- 1 Plug the extender into a power socket near your broadband wireless router (e.g. in the same room). Check the extender **On/Off** button on the top is switched on. Wait 20 seconds for the extender to boot up. The **Power** light will be steady blue and the **Too close** and **Too far** red lights will be flashing together.
- 2 Connect your computer to the extender using option A or B below:

### Option A - Connect wirelessly

- Use the wireless connection software or settings on your computer to display the list of available wireless networks in your area.
- Find your extender in the list and select it; it's called **BTWifiExt750-XXX**.
- Enter your extender's wireless key (printed on the back of this guide).
- Complete the connection on your computer.

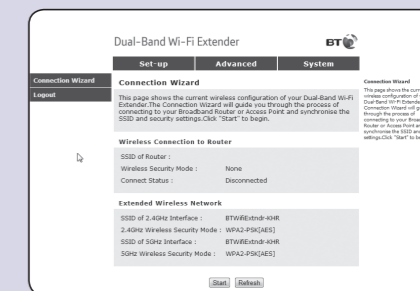
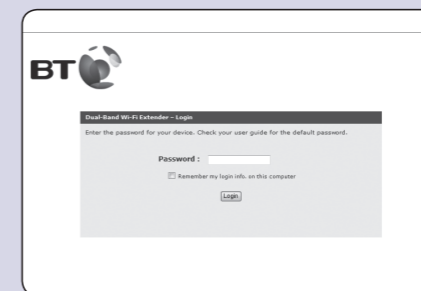
### Option B - Connect using the ethernet cable

- Insert the ethernet cable into the extender and the other end into your computer.



OR

- 3 Open your internet browser and enter **http://192.168.1.1** in the address field.
  - Enter your extender's **Admin password** (printed on the back of this guide), then click **Login**.
  - Click **Start** at the bottom then follow the on-screen connection wizard.



- 4 When you click **Finish** your browser will lose connection to the extender (ignore browser errors). The extender's range indicator light will stop flashing on successful connection. The extender is now configured with your hub/router, and you're ready to find its optimum location, see **2** below.

Full instructions on how to connect devices using different operating systems are in the Frequently Asked Questions, available at [bt.com/wifextender750](http://bt.com/wifextender750).

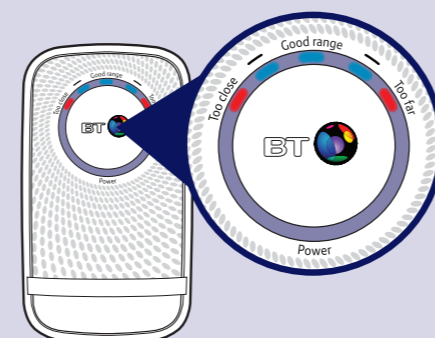
## 3 Connect your devices

The extender gives you two new wireless networks, one on the 2.4GHz band and one on the 5GHz band.

The 5GHz band (**EXT5**) will give the best performance when close to the extender, the 2.4GHz band (**EXT2**) is best for range.

- 1 The extender's network name is the same as your hub/router with **EXT2-** (2.4GHz band) and **EXT5-** (5GHz band) added to the front.  
For example:  
Hub/router wireless network name: BTHub5-1234  
New extended network names: **EXT2- BTHub5-1234** and **EXT5- BTHub5-1234**
- 2 From your device, select the network you wish to connect to.
- 3 Enter the wireless key – this is the same as your hub/router.

- 3 Check the lights and if necessary move the extender closer or further away from your hub/router depending on the light status below. Then check the light status again. A range light will be steady blue or red.



- Too close (red)**  
Move the extender further from the hub and closer to the area you want to receive wi-fi.
- A bit too close (blue)**  
The extender will work but there's less wi-fi extension.
- Good range (blue)**  
Good router signal strength. Ideal location for maximum performance.
- A bit too far (blue)**  
The extender will work but a bit too far from your hub/router for best performance.
- Too far (red) or scrolling back and forth for more than 1min**  
Move the extender closer to your hub/router.

It's normal for the range lights to change occasionally. This is because wireless signals can vary due to other factors e.g. electrical appliances/devices.

For a video on how to set up your extender, go to [bt.com/wifextender750](http://bt.com/wifextender750)